

ESPERANZA : 80'S & 90'S

SABINAL : 70-4138SF.1



Elevation A



Elevation B



Elevation C



4,165 sq ft



5 Bedrooms



5.5 Bathrooms



2 Stories



3 Car Garage

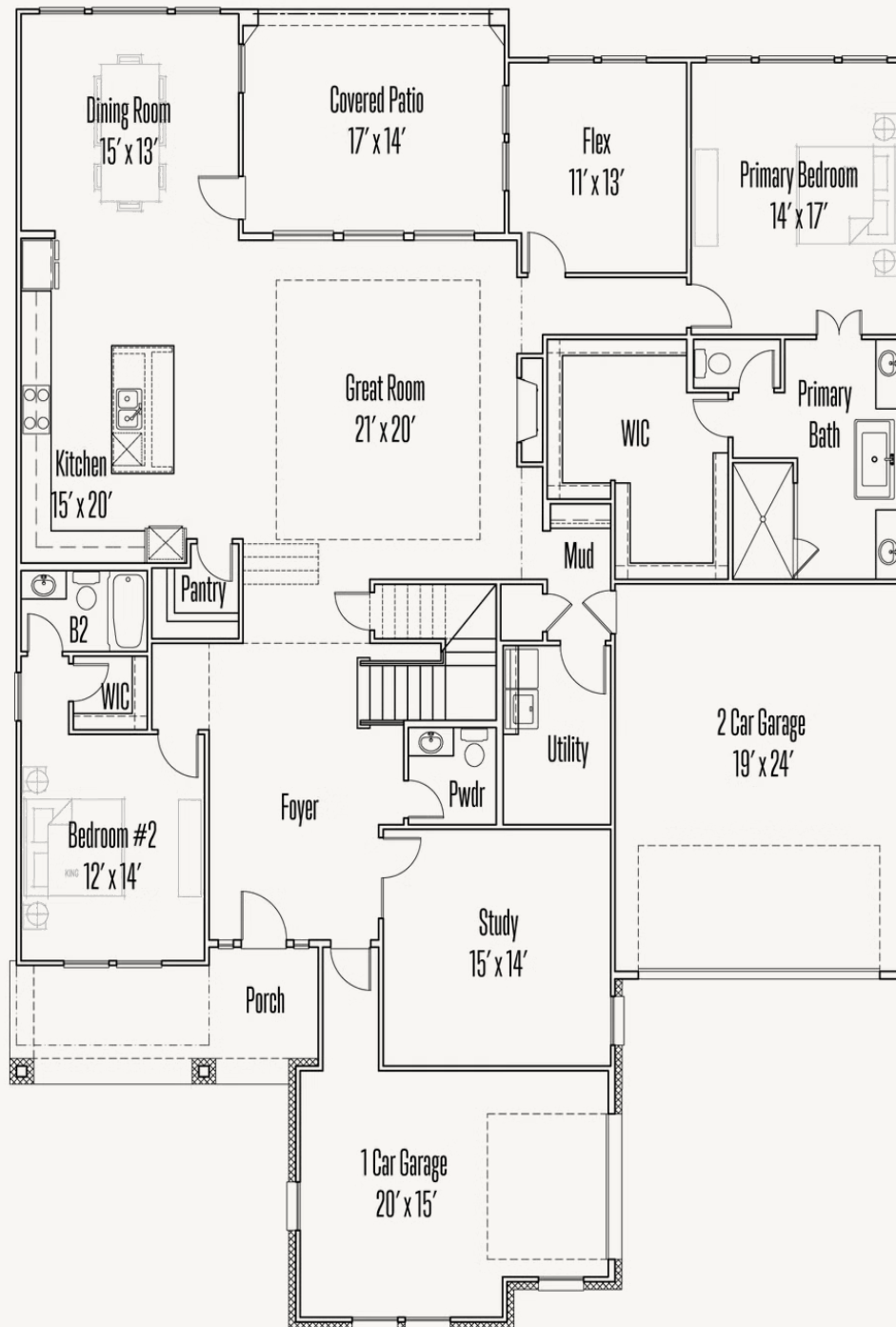




ESPERANZA : 80'S & 90'S

**SABINAL : 70-4138SF.1**

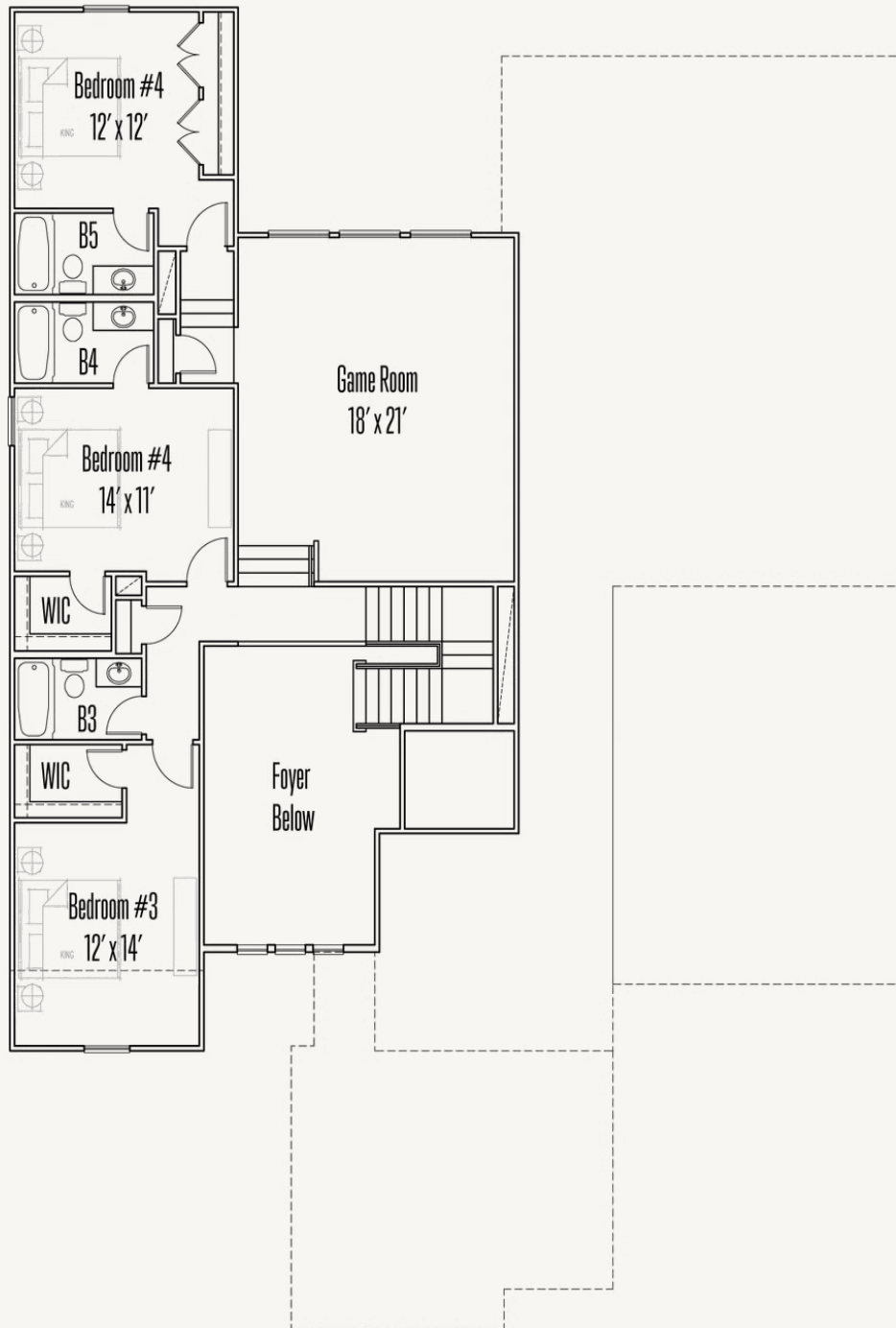
FIRST FLOOR\_B



ESPERANZA : 80'S & 90'S

**SABINAL : 70-4138SF.1**

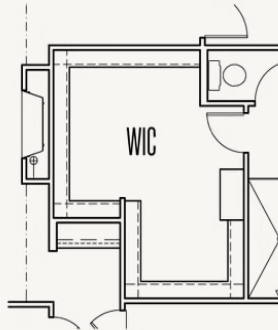
**SECOND FLOOR\_B**



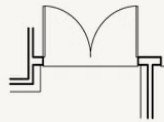
ESPERANZA : 80'S & 90'S

# SABINAL : 70-4138SF.1

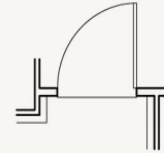
## OPTIONS\_1



Optional Dresser in Primary WIC



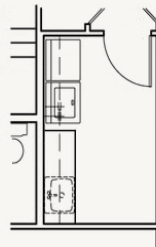
Optional Double Doors at Entry



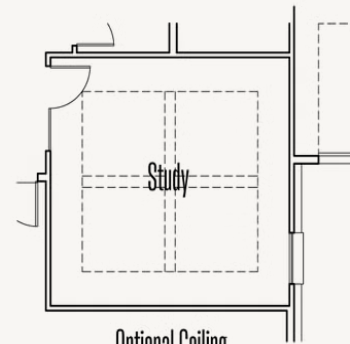
Optional 5' Door at Entry



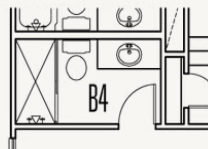
Optional Shower at Bath #5



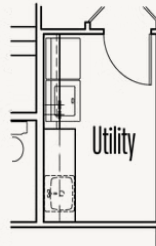
Optional Base & Full Upper Cabinets at Utility



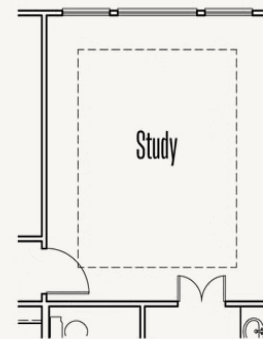
Optional Ceiling Treatment at Study



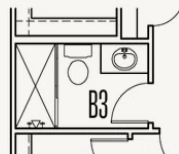
Optional Shower at Bath #4



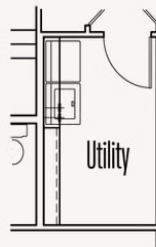
Optional Base & Upper Cabinets at Utility



Optional Step Ceiling Treatment at Primary Bedroom



Optional Shower at Bath #3



Optional Upper Cabinets at Utility



Optional Sliding Glass doors at Great Room



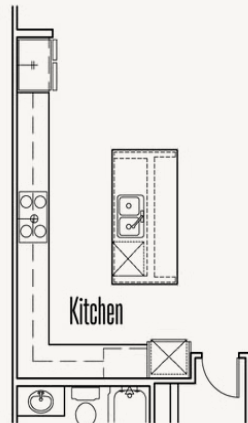
Optional Shower at Bath #2



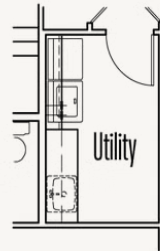
ESPERANZA : 80'S & 90'S

# SABINAL : 70-4138SF.1

## OPTIONS\_2



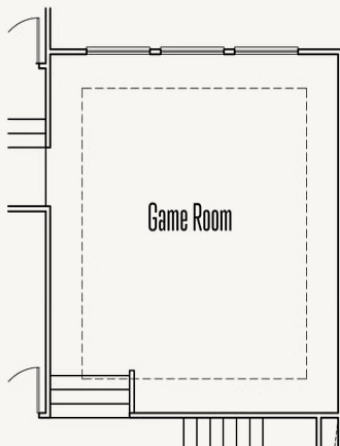
Optional Double Oven cabinet



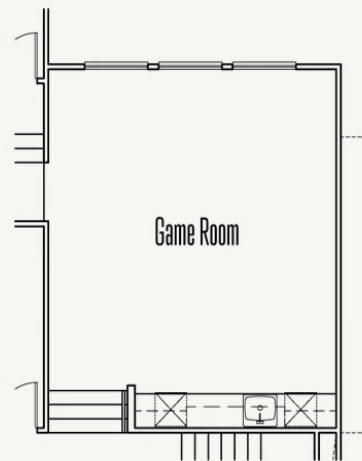
Optional Single Base &  
Upper cabinets at Utility



Optional Cabinets at Dining Room



Optional Step Ceiling treatment at Game Room



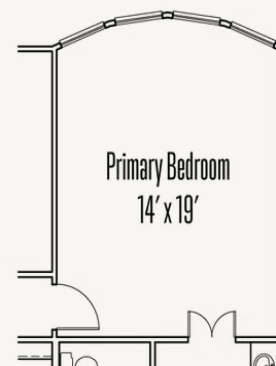
Optional Wet bar at Game Room w/  
Optional UC Refrig and/or Ice Maker



Optional Wet bar at Game Room



Optional Primary Bedroom Box Bay

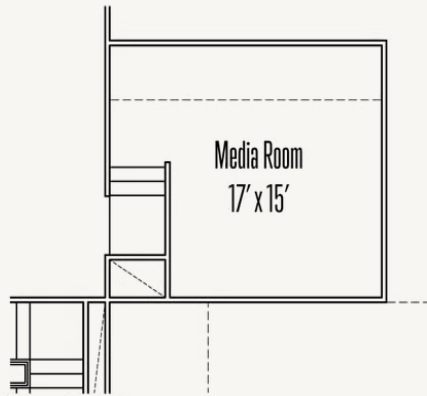


Optional Primary Bedroom Box Bay

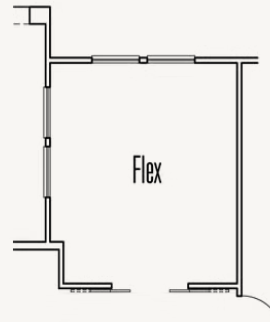
ESPERANZA : 80'S & 90'S

**SABINAL : 70-4138SF.1**

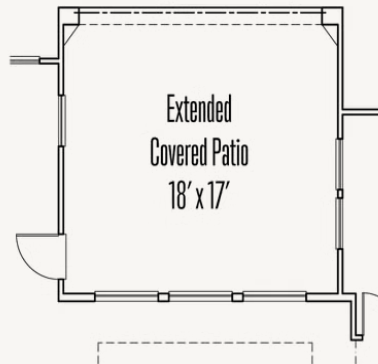
OPTIONS\_3



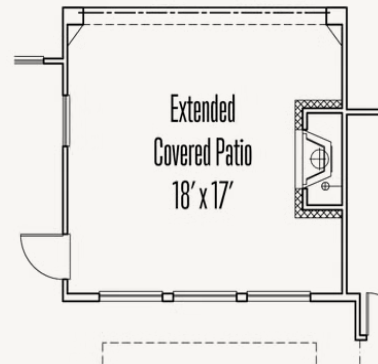
Optional Media Room



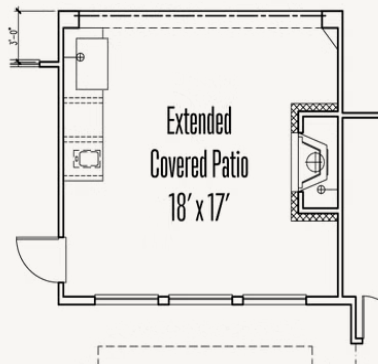
Optional Barn doors at Flex



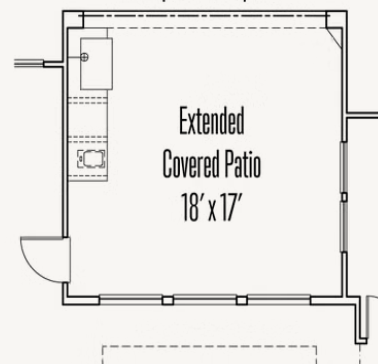
Optional Extended Covered Patio



Optional Extended Covered Patio  
w/ Optional Fireplace



Optional Extended Covered Patio w/  
Optional Grill and Optional Fireplace



Optional Extended Covered Patio w/  
Optional Outdoor Kitchen